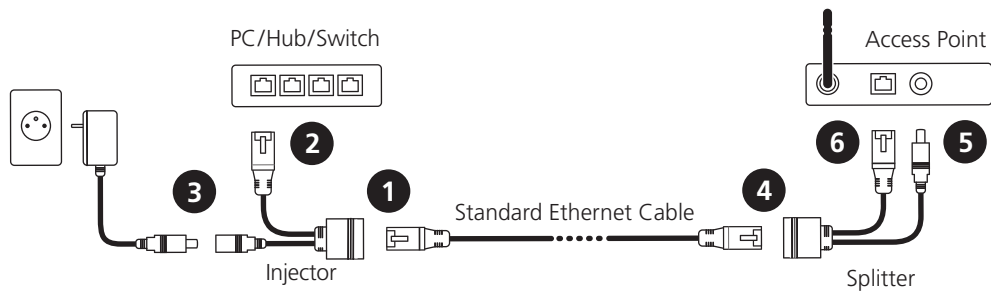
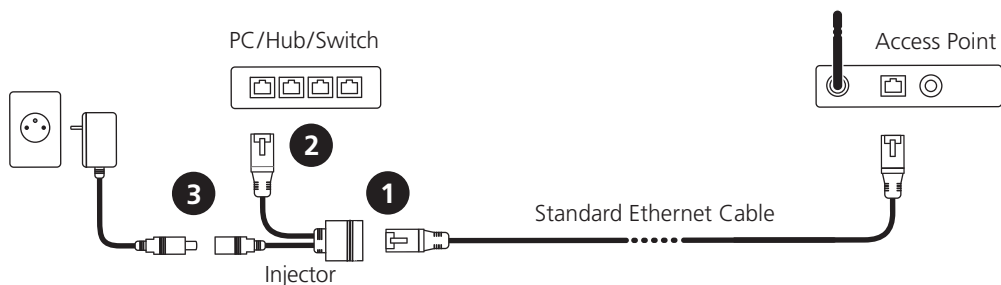


**PASSIVE PoE™ SET**

**On the lower end:**

1. Connect network cable to RJ45 female connector of Passive PoE™ Injector
2. Connect RJ 45 male connector of Passive PoE™ Injector to lower end device (PC/Hub/Switch)
3. Connect DC connector of Passive PoE™ Injector to DC power source

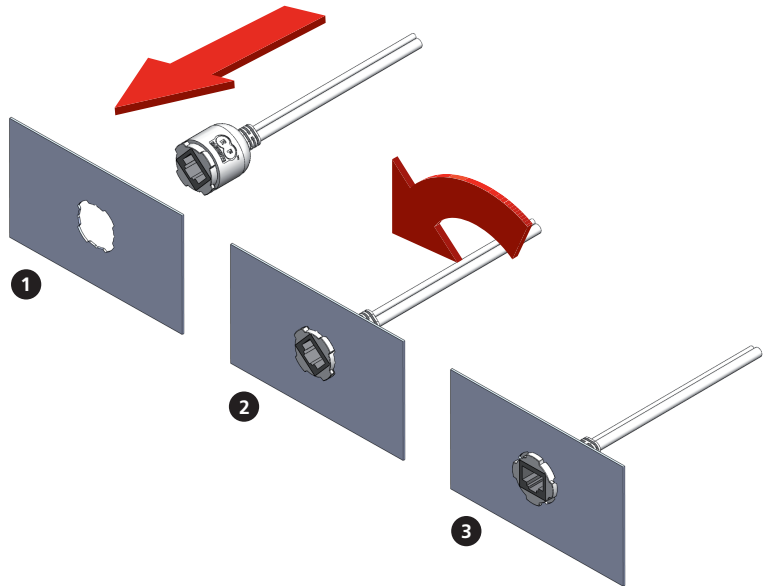
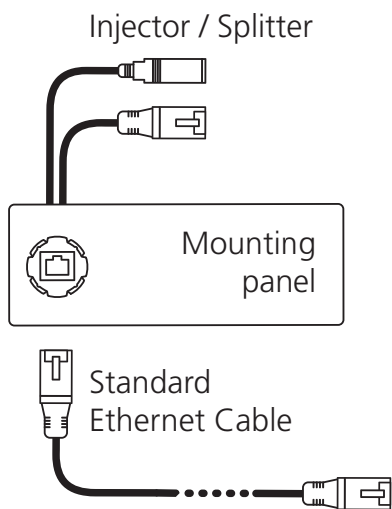
**On the upper end:**

4. Connect network cable to RJ45 female connector of Passive PoE™ Splitter
5. Connect the DC connector of Passive PoE™ Splitter to DC connector of device you intend to power using Passive PoE™
6. Connect RJ 45 male connector of Passive PoE™ Splitter to ethernet port of device you intend to power using Passive PoE™

**PASSIVE PoE™ INJECTOR**

**Installation Instruction**

1. Connect network cable to RJ45 female connector of Passive PoE™ Injector
2. Connect RJ 45 male connector of Passive PoE™ Injector to lower end device (PC/Hub/Switch)
3. Connect DC connector of Passive PoE™ Injector to DC power source

## Bulkhead Mount Feature



1. Insert PoE into the cut-out as shown on picture
2. Rotate PoE for about 45 degrees, until you feel click
3. Installation is completed