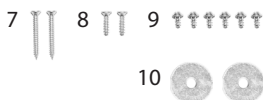
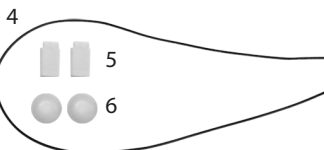


## Package Contains:

1. Body
2. Top Cover
3. Bottom Cover
4. Seal
5. Light Guides
6. Plastic Caps
7. Screws 2.9×25mm (2×)
8. Screws 2.9×12mm (2×)
9. Screws 2.9×6.5mm (6×)
10. Washers (2×)

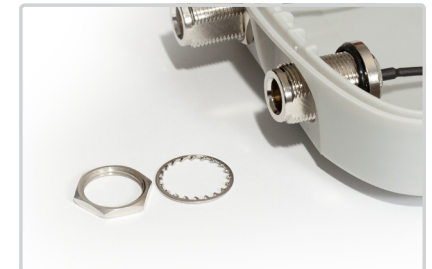


## 1 Installation of Pigtails

A Install the SMA pigtails using special washer, nut and o-ring.



B When installing N-connectors, expand the openings using cutter.



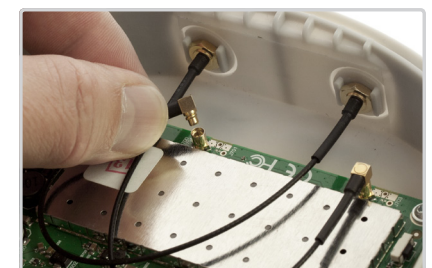
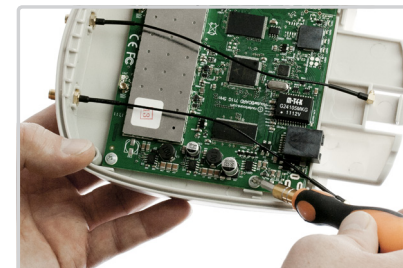
C Use Plastic Caps to cover the top openings when not used for pigtail installation. Secure Caps with 2.9×6.5mm (the smallest) screws and washers.



## 2 Installation of RouterBoard

A Install the RouterBoard using 2.9×6.5mm (the smallest) screws.

B Connect the pigtails to the RouterBoard.



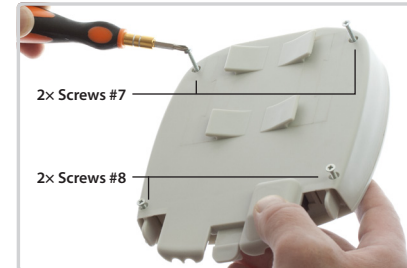
### 3 Installation of the Seal and Light Guides

- A Install the Silicone Seal in RockeTik's Body.
- B According to the specific RouterBoard setup, install the Light Guides to support readability of RouterBoard LEDs.



### 4 Install the Top Cover

Install the Top Cover using screws 2.9×25mm and screws 2.9×12mm. Mind the correct positioning of the Screws as shown on picture! Cut or chip away premolded parts of the front panel, if interfering with RouterBoard's connectors.



### 5 How to Mount, Remove and Protect the RockeTik

You can easily snap RockeTik to compatible Antenna. Please refer to our webpage [www.rfelements.com](http://www.rfelements.com) to check updated list of compatible antennas.

To remove RockeTik from the mount, use tool to release the mount's lock. Any firm object that fits the gap could be used: screwdriver, wrench, knife etc.



### RF elements Accessories

For installation on the Wall or Pole, use RF elements Bracket, bracket compatible with RockeTik, Rocket and StationBox Mikro.

