

# Quick Installation Guide Direct Series



\*Direct 21-5G shown on pictures



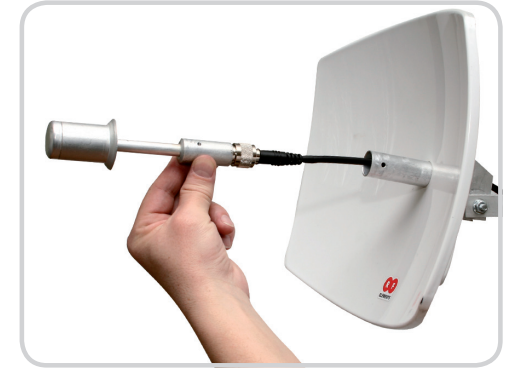
1 Insert the feedhorn holder through the back of the dish and align according to the desired polarization (Pic. 8). Attach with two screws.



2 Attach the mounting bracket to the feedhorn holder using one bolt and nut. Do not tighten the nut yet.



3 Insert the antenna cable through the feedhorn holder.

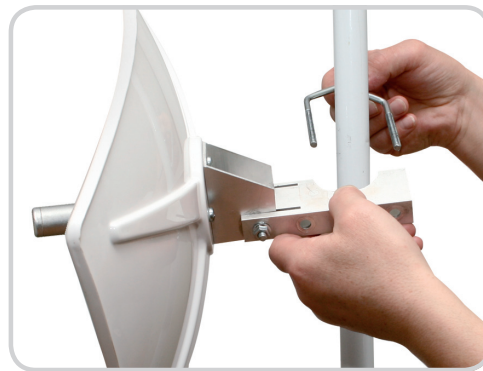


4 Attach the feedhorn to the antenna cable.



5 Insert the feedhorn into the feedhorn holder. Align according to the desired polarisation (Pic. 8), and secure with one screw.

**Direct 21-5G:** the axis of the securing screw should align with the long axis of the dish.



6 Attach the antenna to the pole using the U-bolt and two nuts.



7 Align the antenna azimuth and elevation as required and tighten all nuts and bolts.



## 8 Polarization Settings

Models with asymmetrical (rectangular) dishes require alignment of the dish when polarization changed, as seen on pictures. Models with symmetrical (round) dishes do not require alignment of dish when polarization changed.